

- **Style: Simple**
- **Size: Mid Tower supports up to ATX MB**
- **Material: Steel & Tempered Glass**

Main Features

- **Connection** : Front I/O ports with 2 x USB 3.0 & 1 x USB 3.2 (Gen 2) Type C
- **Expansion** : 2+5 drive bays with modular drive trays design
- **Support** : Supports AIO cooling solutions



Specification

Model	Divider 300 TG ARGB	Divider 300 TG ARGB Snow
P/N	CA-1S2-00M1WN-01	CA-1S2-00M6WN-01
Case Type	Mid Tower	
Chassis Dimension (H*W*D)	475 x 220 x 461 mm (18.7 x 8.66 x 18.1 inch)	
Net Weight	8.47 kg / 18.67 lbs.	
Side Panel	Tempered Glass x 2	
Color	Black	White
Material	SPCC	
Cooling System	Front(intake): 120 x 120 x 25 mm ARGB fan (1000rpm, 27.2 dBA) x 3 Rear(exhaust): 120 x 120 x 25 mm Turbo fan (1000rpm, 16 dBA) x 1	
Drive Bays	2 x 3.5", 5 x 2.5" or 7 x 2.5"	
Expansion Slots	7 (Rotatable Patented Design)	
Motherboards	6.7" x 6.7" (Mini ITX), 9.6" x 9.6" (Micro ATX), 12" x 9.6" (ATX)	
I/O Port	USB 3.2 (Gen 2) Type-C x 1, USB 3.0 x 2, HD Audio x 1	
PSU	Standard PS2 PSU (optional)	
Fan Support	Front: 3 x 120mm, 2 x 120mm, 1 x 120mm 2 x 140mm, 1 x 140mm Top: 1 x 120mm, 1 x 140mm Right (M/B Side): 2 x 120mm, 1 x 120mm Rear: 1 x 120mm	
Radiator Support	Front: 1 x 360mm, 1 x 240mm, 1 x 120mm 1 x 280mm, 1 x 140mm Right (M/B Side): 1 x 240mm, 1 x 120mm Rear: 1 x 120mm	
Clearance	CPU cooler height limitation: 145mm VGA length limitation: 360mm(With radiator) 390mm(Without radiator) PSU length limitation: 180mm (With HDD Cage) 220mm(Without HDD Cage)	



Thermaltake Divider 300 TG ARGB Mid Tower Chassis

Packaging

Package Information	Divider 300 TG ARGB	Divider 300 TG Snow ARGB
EAN Code	4713227527453	4713227527590
UPC Code	841163077467	841163077603
N.W	8.47 kg / 18.67 lbs.	
G.W	9.92 kg / 21.87 lbs.	
Carton Size (L x W x H)	557 x 317 x 545 mm / 21.9 x 12.5 x 21.5 inch	
Cuft	3.4	
Container	w/o pallet	
20'	283 pcs	
40'	591 pcs	
40' HQ	671 pcs	



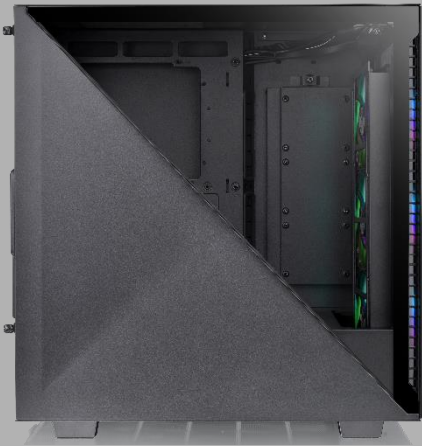


Thermaltake Divider 300 TG ARGB Mid Tower Chassis

Appearance –
Black version



Angle view



Left Side view



Front view



Right Side view



Internal Structure



Rear view



Top view



Bottom view



Thermaltake Divider 300 TG ARGB Mid Tower Chassis

Appearance –
Snow version



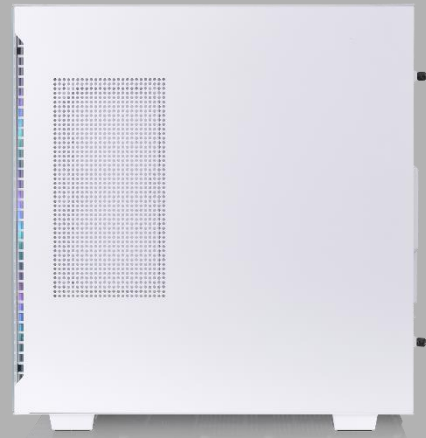
Angle view



Left Side view



Front view



Right Side view



Internal Structure



Rear view



Top view



Bottom view



Thermaltake Divider 300 TG ARGB Mid Tower Chassis



The brand new ***Divider Series***



Thermaltake Divider 300 TG ARGB Mid Tower Chassis

Clearance



Maximum support up to 120mm fan x 7

Maximum radiator support up to 360mm at front



3mm Tempered Glass Window x 2



Thermaltake Divider 300 TG ARGB Mid Tower Chassis

Unique Design



Unique Side Panel Design-
triangular Tempered Glass/Steel
side panels for left side panel



Thermaltake Divider 300 TG ARGB Mid Tower Chassis

Pre-installed
ARGB Fans



Pre-installed three hydraulic bearing 120mm ARGB front fans which can effectively lower the operation noise and enhance the thermal efficiency.



Divider 300 TG ARGB



Divider 300 TG Snow ARGB

SPEC for Case ARGB fans

- Fan Speed: 1000 +/- 10% RPM
- Fan Airflow: 45 CFM
- Fan Air Pressure: 0.82 mm-H2O
- Fan Noise Level: 27.2 dBA
- Fan Bearing: Hydraulic bearing

ARGB lighting Control Instruction

I/O Port



R



USB3.0



USB3.0



TYPE-C

Wave Mode

Mode 1

Flow Mode

Mode 2

RGB Lighting

Mode 3 (Single Color)

Radar Mode

Mode 4~10

(Red, Yellow, Green, Cyan, Blue, White, Purple)

Breath Mode

Mode 11~18

(RGB, Red, Yellow, Green, Cyan, Blue, White, Purple)

Full Lighted Mode

Mode 19

Single Color

Mode 20~26

(Red, Yellow, Green, Cyan, Blue, White, Purple)

Light Off

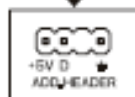
Mode 27

⊗ Long press on RGB button for 3 seconds, fan will blink twice which now are controlled by MB software. And vice versa.

How to connect MB

ASUS

Aura Addressable Strip Header(s)



MSI

JRGB-strip Header(S)



ASROCK

Addressable RGB LED Header(s)



GIGABYTE

AORUS RGB Fusion with Digital LEDs





Thermaltake Divider 300 TG ARGB Mid Tower Chassis

Structure (External)



USB 3.2 (Gen 2) Type-C x 1

USB 3.0 x 2

HD Audio

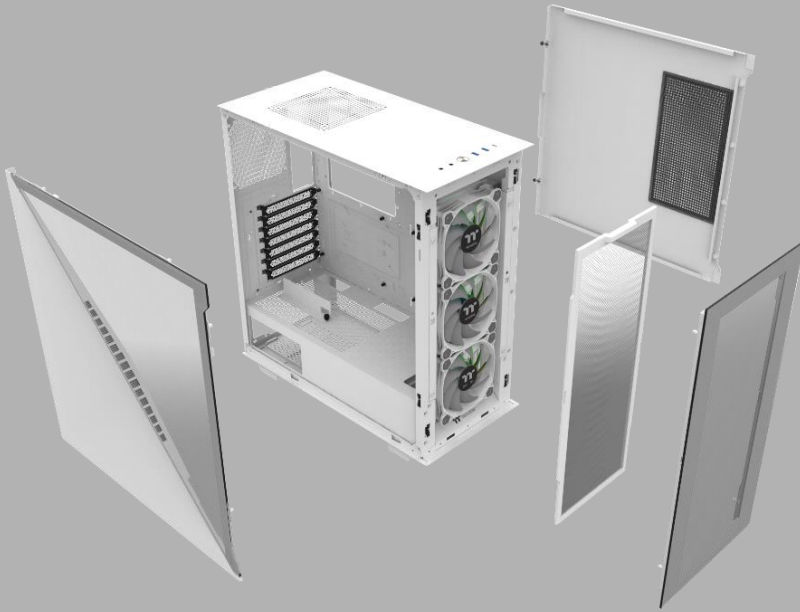


The gap between triangular TG and steel panel is designed for better air-flow

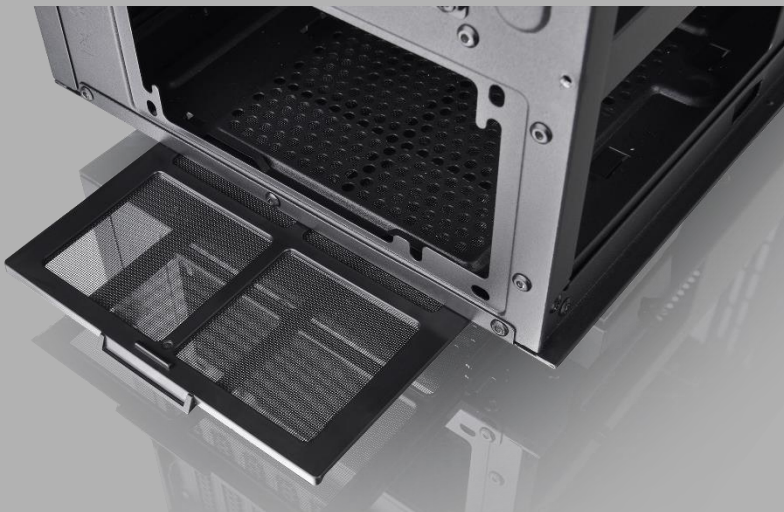


Thermaltake Divider 300 TG ARGB Mid Tower Chassis

Structure (External)



Tool-free,
easy-to-remove
Panels design

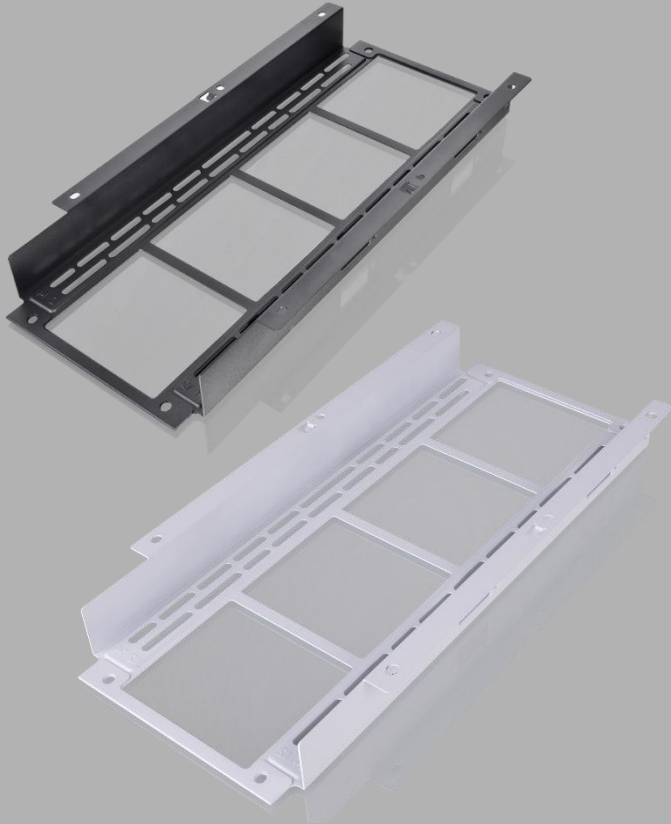


Bottom filter



Thermaltake Divider 300 TG ARGB Mid Tower Chassis

Structure (Internal)



Removable front fan/radiator bracket for easier installation



Preinstalled 120mm rear turbo fan



Thermaltake Divider 300 TG ARGB Mid Tower Chassis

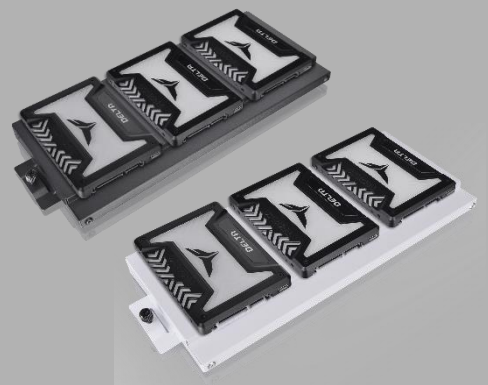
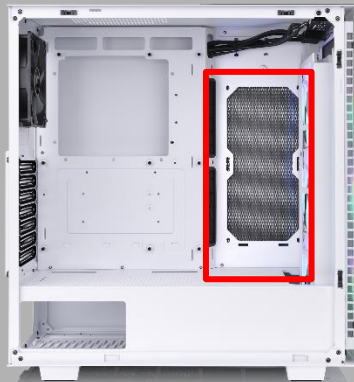
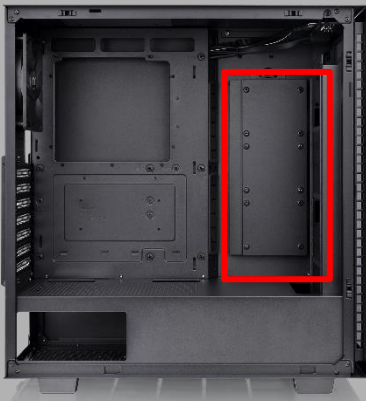
Structure (Internal)



Full length power cover



Cable cover design for cleaner internal look



It can support up to 3 2.5" SSD



Thermaltake Divider 300 TG ARGB Mid Tower Chassis

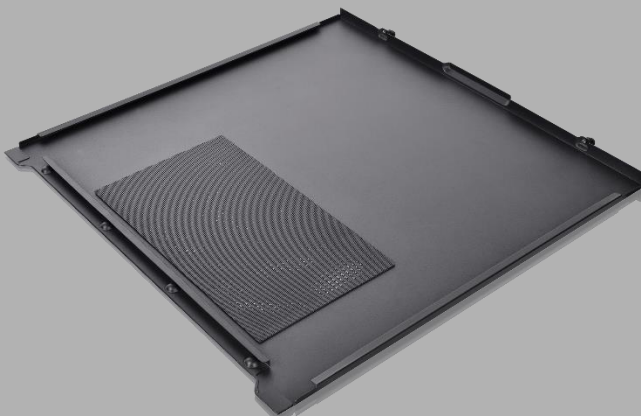
Structure (Internal)



Front filter



Top filter



Left side filter

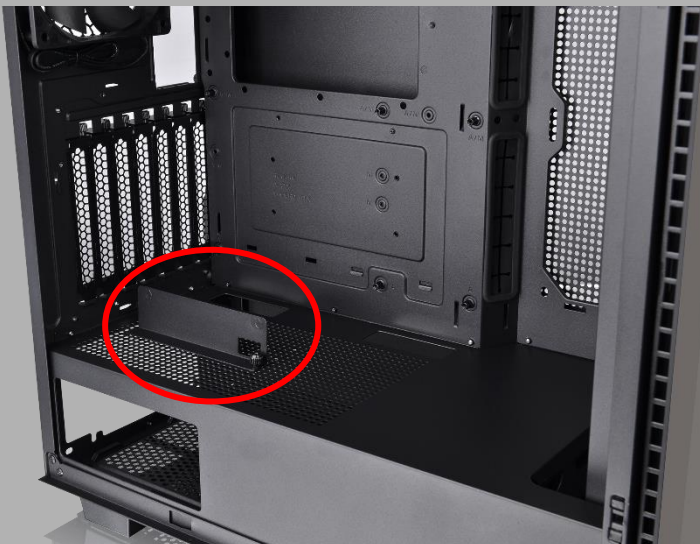
Rotational VGA bracket design



Horizontal VGA installation



Vertical VGA Bracket installation

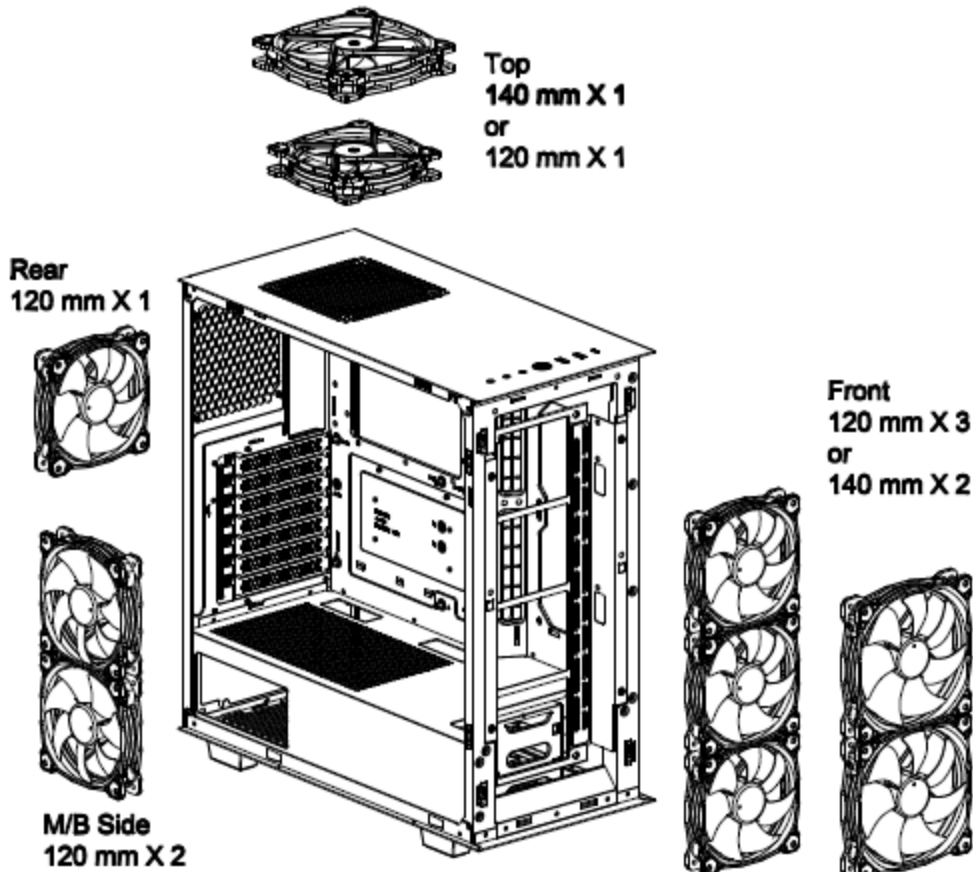


VGA Support Bracket in accessory box supports vertical VGA installation

Compatibility List

Fan Compatibility List			
	120mm	140mm	200mm
Front	3	2	-
Top	1	1	-
Rear	1	-	-
Right	2	-	-

Air Cooling Installation



All-in-One Compatibility

All-in-One Compatibility List						
	120mm	240mm	360mm	140mm	280mm	420mm
Front	●	●	●	●	●	-
Right	●	●	-	-	-	-
Rear	●	-	-	-	-	-
Bottom	-	-	-	-	-	-

AIO Liquid Cooling Installation

