



# PNY GEFORCE RTX™ 5090 32GB STD OC

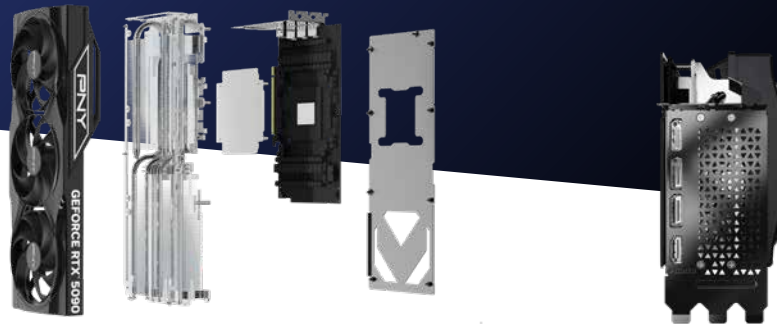
PNY GEFORCE RTX™ 5090 32GB STD OVERCLOCKED DLSS 4

VCG509032TFXPB1-0



## GAME CHANGER

The NVIDIA GeForce RTX™ 5090 is the most powerful GeForce GPU ever made, bringing game-changing capabilities to gamers and creators. Tackle the most advanced models and most challenging creative workloads with unprecedented AI horsepower. Game with full ray tracing and the lowest latency. The GeForce RTX 5090 is powered by the NVIDIA® Blackwell architecture and equipped with 32GB of super-fast GDDR7 memory, so you can do it all.



### **NVIDIA Blackwell Architecture**

The Ultimate Platform for Gamers and Creators

### **Fifth-Gen Tensor Cores**

Max AI performance with FP4 and DLSS 4

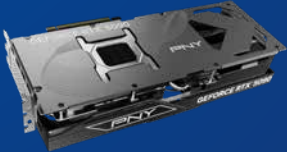
### **Fourth-Gen Ray Tracing Cores**

Built for Mega Geometry



### TRIPLE FAN COOLING

With three fans working together, heat is distributed and dissipated more efficiently across the GPU surface



### METAL BACKPLATE

Adds additional support to prevent the card from sagging and vents that enhance passive cooling

## KEY FEATURES

- NVIDIA Blackwell Architecture
- Dedicated Ray Tracing Cores
- Dedicated Tensor Cores
- NVIDIA DLSS 4
- Game Ready and NVIDIA Studio Drivers
- NVIDIA® App

## SYSTEM REQUIREMENTS

- PCI Express gen 5 -compliant motherboard with one 3.5-width x16 graphics slot
- Four 8-pin supplementary power connectors
- 1000 W or greater system power supply<sup>2</sup>
- Microsoft Windows® 11 64-bit, Windows 10 64-bit, Linux 64-bit
- Internet connection<sup>1</sup>

## PRODUCT SPECIFICATIONS

NVIDIA® CUDA Cores	21760
Clock Speed	2010 MHz
Boost Speed	-
Memory Speed (Gbps)	28
Memory Size	32GB GDDR7
Memory Interface	512-bit
Memory Bandwidth (GB/s)	1792
TDP	575 W
Outputs	DisplayPort 2.1b with UHBR20 (x3), HDMI 2.1b
Multi-Screen	4
Resolution	4K at 480Hz or 8K at 120Hz with DSC
Power Input	1x16 (1x16 to 4x8 adapter included)
Bus Type	PCI-Express 5.0 x16

## PRODUCT INFORMATION

PNY Part Number	VCG509032TFXPB1-O
UPC Code	751492794228
Card Dimensions	13.00" x 5.50" x 2.76"; 3.5 Slot 328.7 x 137.7 x 70.0mm; 3.5 Slot
Box Dimensions	15.94" x 7.83" x 4.06" 405 x 199 x 103mm

- 1 Graphics Card driver is not included in the box; GeForce Experience will download the latest GeForce driver from the Internet after install.
- 2 Minimum is based on a PC configured with a Ryzen 9 5900X processor. Power requirements can be different depending on system configuration.

PNY Technologies, Inc. 100 Jefferson Road, Parsippany, NJ 07054 | Tel 973-515-9700 | Fax 973-560-5590 | [WWW.PNY.COM](http://WWW.PNY.COM)

Features and specifications subject to change without notice. The PNY logo is a registered trademark of PNY Technologies, Inc. All other trademarks are the property of their respective owners. © 2025 PNY Technologies, Inc. All rights reserved.

©2025 NVIDIA Corporation. NVIDIA, the NVIDIA logo, GeForce, GeForce Experience, GeForce RTX, and G-SYNC are registered trademarks and/or trademarks of NVIDIA Corporation in the United States and other countries. All other trademarks and copyrights are the property of their respective owners.

