

# INTEL 1851 CPU Contact Frame V1

## High Performance Cooling Solutions – Made in Germany

The Intel 1851 CPU Contact Frame V1 replaces the stock ILM of the motherboard, ensuring even pressure on the CPU when mounted in the socket. The frame's inner contour has been adjusted to fit processors designed for the 1851 socket. Installation of the contact frame is user-friendly as it does not require specific torque when screwing it in place.

The Intel 1851 CPU Contact Frame V1 protects the CPU during frequent installations and enhances temperatures and memory clock stability during extreme overclocking.

### Why use a contact frame?

The standard Integrated Loading Mechanism (ILM) has contact points located in the center of the elongated CPU. As a result, uneven contact pressure causes the surface of the Integrated Heat Spreader (IHS) to bend concavely. This means the CPU cooler primarily makes contact with the edges of the IHS, leaving the thermal "hotspot" of the CPU not optimally covered.

The Intel 1851 CPU Contact Frame V1 features a special inner contour that shifts the contact pressure from the center of the CPU to the edges during installation, preventing the concave bending of the IHS. This allows the CPU cooler to sit better on the processor, creating a larger contact area to dissipate the CPU's heat. Since the thermal center of Arrow Lake processors has shifted to the upper third of the processor, a level surface is particularly important.

The installation of the contact frame is simple and can be completed in just a few steps. Depending on the CPU cooler used and the specific CPU, processor temperatures can be noticeably reduced.



### Short informations

- Lower CPU temperatures
- Easy assembly
- High compatibility
- Anodised aluminium

### Lieferumfang

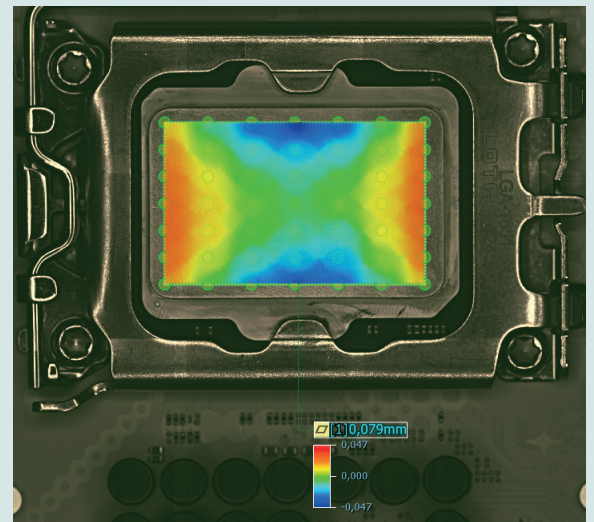
- 1x CPU Contact Frame
- 4x cylinder-head screws UNC thread
- 1x hexagon socket wrench
- 1x angle wrench Torx

## Technical data

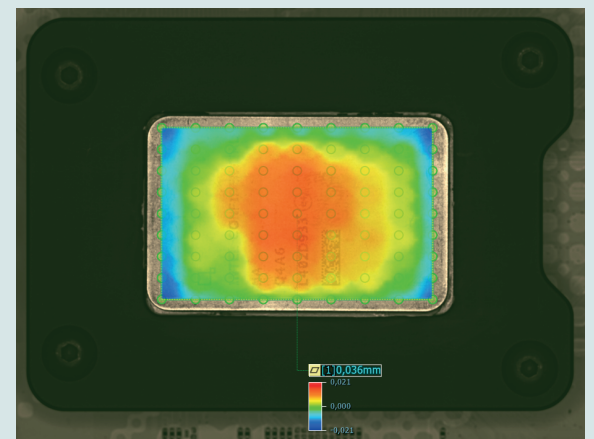
Unit:	Value/description:
Material:	Aluminium, anodised
Colour:	Black
Typical application:	CPU mounting aid
Length:	71 mm
Width:	51 mm
Height:	6 mm
Package size:	21x15x3 cm
*Gross weight:	65 g
*Net weight:	21 g
Item number:	TG-CF-i1851-V1
EAN-Code:	4260711991103
PU:	14 Pcs.

\*Net weight is the total weight of an article excluding the weight of packaging and accessories. The gross weight refers to the total weight of the product including accessories and packaging. Slight weight deviations are possible due to production factors.

### with ILM



### with Intel 1851 CPU Contact Frame V1



## The Intel 1851 CPU Contact Frame V1 in Action

At an XOC event in Taipei, Taiwan, hosted by ASUS as a pre-launch event in late September 2024, the Intel 1851 CPU Contact Frame V1 was tested. The renowned Overclocked Gaming Systems (OGS) team from Greece consistently achieved 33-50 MHz higher clock speeds using the Intel 1851 CPU Contact Frame V1 in conjunction with liquid nitrogen (LN2).

*"The Thermal Grizzly 1851 Contact Frame helped us gain 33-50 MHz every time we switched from the Intel Stock ILM to the Contact Frame."  
Team OGS*

In everyday use, temperature improvements of 0 to 6 degrees Celsius can be achieved when replacing the standard ILM with the Intel 1851 CPU Contact Frame V1. When replacing the Reduced Load ILM (RL-ILM) found on some socket 1851 motherboards, additional temperature reductions of up to 3°C can be achieved.

## Compatibility information

The Intel 1851 CPU Contact Frame V1 is compatible with Intel Core Ultra 200 processors for the LGA1851 socket. The frame is also only compatible with CPUs that have an Integrated Heat Spreader (IHS) ground down by no more than 0.2 millimeters. When mounting, it is important to ensure that no electronic components are located beneath the frame, especially with Mini-ITX form factor motherboards.

## Trademark Information

Thermal Grizzly is a registered trademark.

## Please note

The data in this technical data sheet are based on our current knowledge and experience. Due to the large amount of possible factors, this should not be construed as to release the users from doing their own tests and screening. No legally binding assurance of specific properties or applicability for a concrete purpose should be derived from these data. Please consider contacting us for further detail. It is the responsibility of the recipient of our products to ensure that any proprietary rights and existing laws and legislation are observed.